

Workspace Areas


A Smart UI Workspace
enhancement approach

Olivier Rioland
Technical Leader, AEROW SAS France



A large, stylized orange graphic on the left side of the slide, resembling a flower or a hand with five rounded petals or fingers.

Agenda

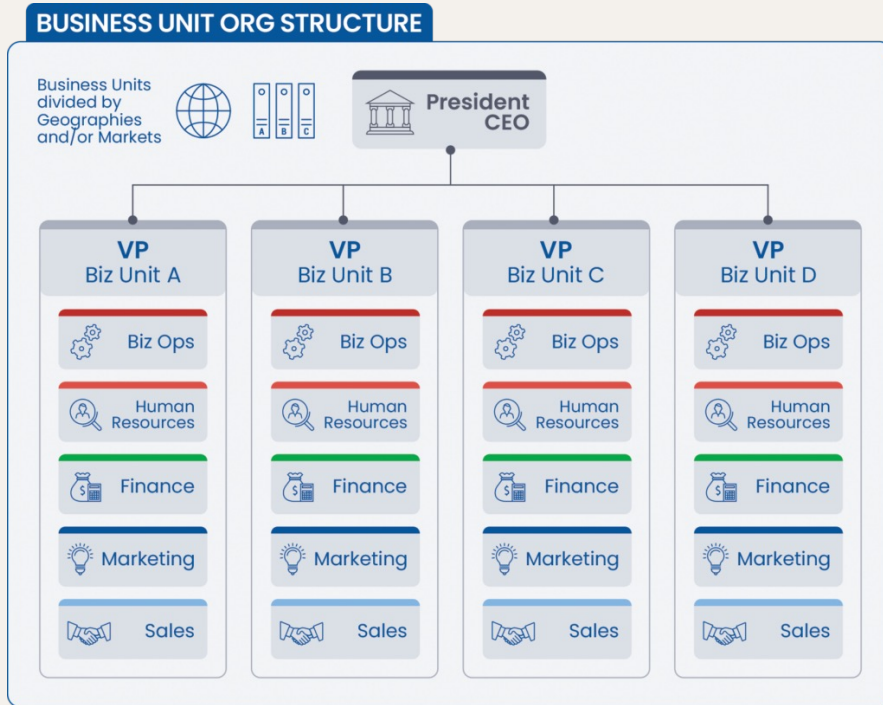
- User Story Approach
 - Solution
 - Feedbacks
- 
- A large, stylized orange graphic on the right side of the slide, identical to the one on the left, resembling a flower or a hand with five rounded petals or fingers.

A large, stylized orange graphic on the left side of the slide, resembling a flower or a fan with five rounded petals.

- **User Story Approach**
- Solution
- Feedbacks



General scope presentation



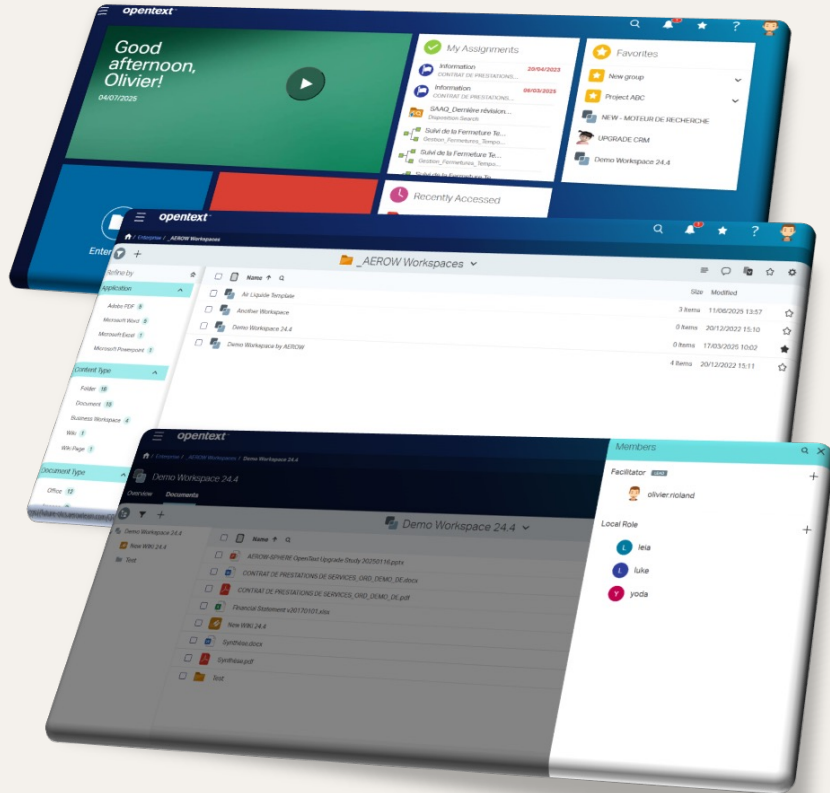
Consider a large organization

It's organized through several Business Units and / or self-organized Departments

You have one single IT Central Team, so you want to have only one single Enterprise Document Management System

Each Business Unit and Department has its own Document Management Team, each one may organize hundreds of users and millions of documents

OpenText Content Management is great



Content Server is great!

Easy to deploy

Strong Document Management features

Tons of customization capacities

Smart UI is great!

Intuitive and Document oriented

Capacities with other external applications

Business Workspace are great!

Build collaborative teams

Gain efficiency

What may happen (sometime)



“It’s a bit... *rigid*... isn’t it ?”

What happens when organization changes?


How users will identify who is properly responsible of a given workspace?

How could I create (and maintain) workspace templates for my own organization only?

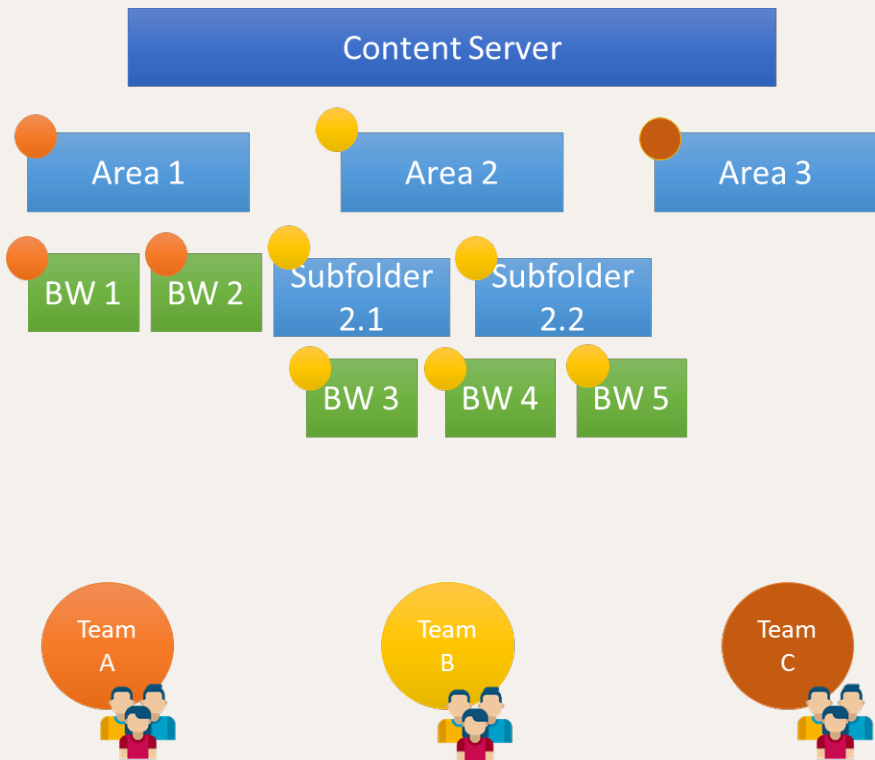
How could I customize anything on my workspace?

A large, stylized orange graphic on the left side of the slide, resembling a flower or a hand with five rounded petals or fingers.

Agenda

- User Story Approach
 - **Solution**
 - Feedbacks
- 
- A large, stylized orange graphic on the right side of the slide, identical to the one on the left, resembling a flower or a hand with five rounded petals or fingers.

Workspace Areas with Module Suite



Key concepts

An **Area** is a folder with a **team** of managers

All Workspaces created in this Area can be **managed** by this team

Features

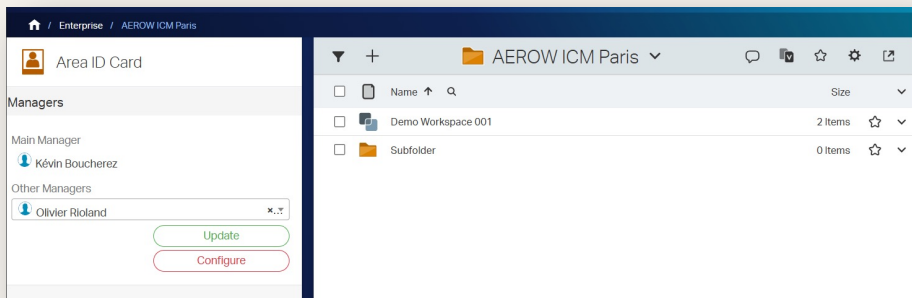
Restitute "**ID Card**" with managers of Area in the whole Area

Manager can **define Perspective** for the Area

Direct access to **Area Workspace Templates**

Within Workspaces, edit **Homepage**

Some Screenshots



ID Card

Shows Main **Manager** and Other Managers

“**Configure**” button is restricted to Managers

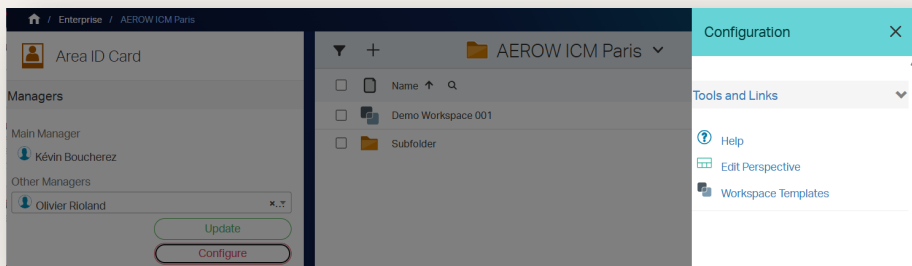
Managers can add content in this folder

Configure button

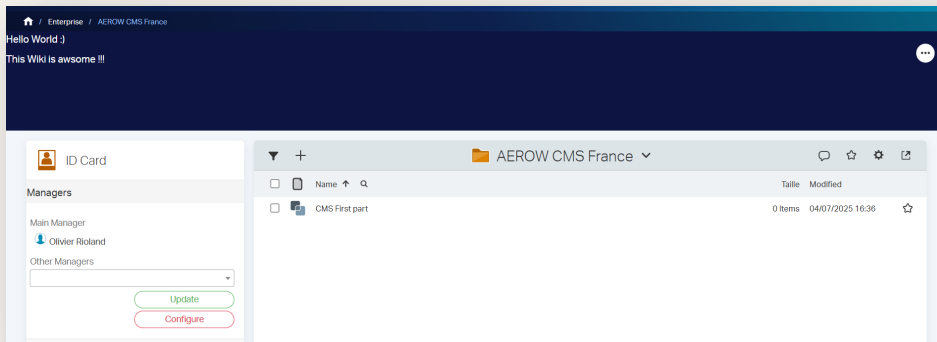
Shows a **side panel** where you can access Tools and Links

Edit **Perspective** : edit Perspective for this Area

Workspace **Templates** : access to Workspace templates of this area, where Manager can define them



Some other Screenshots



Define Perspective

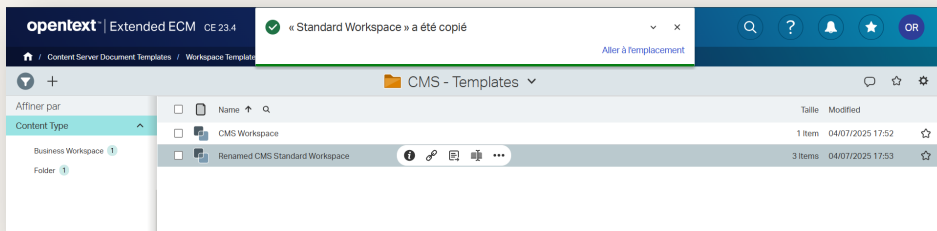
Let “Managers” access **Perspective Manager** and edit directly the expected Perspective

Initial Perspective is built from a “**root perspective template**”, so you can prepare some customizable perspectives

Define Templates

Let **Managers define** all the templates they really need for their own business

They can also **copy templates** from other Areas



Some more Screenshots



Workspace Homepages

Based on **“Wiki”** standard component

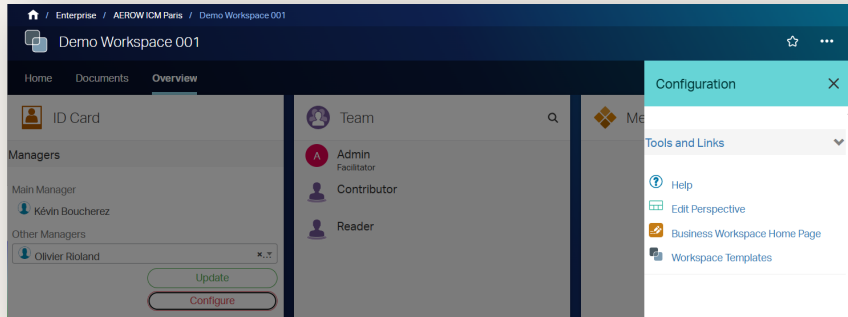
Can reconstitute **content**, left menu and right menu

Real wiki is **located within Workspace**, so it is not linked to perspective

ID Card on Workspace

Configuration menu is accessible to Workspace **Team Leaders**

It allows them to **configure Home Page** directly and access more tools



About central administration part

opentext | Extended ECM CE 23.4

Administration / AerowPackageManager / AerowWorkspaceAreas / Views / Manage WorkspaceAreas

Area List

+ Create

Area Code	Managers	Area Folder	Actions
ICM	Kévin Boucherez, Olivier Rioland	AEROW ICM Paris	Details Delete
CMS	Olivier Rioland	AEROW CMS France	Details Delete

Search Area Code Search Managers Search Area Folder Search Actions

2 Items 1

List and manage all Areas

Simple **Datatable** with full features

Fully **integrated with Smart UI**:

- Breadcrumb path
- CSS override

Details on an Area

Exactly same info as ID Card

Because it is the same as ID Card form

opentext | Extended ECM CE 23.4

Administration / AerowPackageManager / AerowWorkspaceAreas / Views / Manage WorkspaceAreas

Managers

Main Manager

Kévin Boucherez

Other Managers

Olivier Rioland

Cancel Update

A large, stylized orange graphic on the left side of the slide, resembling a flower or a fan with five rounded petals.

Agenda

- User Story Approach
- Solution
- **Feedbacks**



Feedback once deployed and used



It really helps!

Defines a structure level that allows some management delegation

Let Managers define and maintain their own Templates is a real benefit

Homepage on Workspace is very nice



UI Customization

It's not just a matter of technical tooling

Defining a Perspective on an "Area" level is complex at an organization level

Currently, default UI is still used



More features

Some other features were added in "Configure Menu", such as:

- Massive user management
- Data export tooling
- Links
- Reports
- ...

Thank you

Feel free to ask any questions!

Olivier Rioland
Technical Leader, AEROW SAS France

